



INTERFAITH
Family
Shelter

March 2023

Spring 2023 Newsletter

Uniting in service to families,
with children, facing homelessness

From Our Executive Director:

Dear Friends of Interfaith,

Even as I was shoveling snow and scraping ice off the ground around our new **Hospitality House** in December, I knew that we need to continue creating spaces for families experiencing homelessness in our community.



The Interfaith Family Shelter now encompasses four sites for families. Unfortunately, our community can still only shelter half the number of families in need on any given night. Although many families may find a warm respite in a motel, what they need more than anything is a safe and stable place to call home.

Interfaith continues to partner with faith groups and the **City of Everett** to create shelter spaces for families while they work to achieve that safe and stable home.

Faith Lutheran Church and **Faith Food Bank** have been working with us to create **Faith Family Village**: on the church campus off Evergreen Way and Madison, we are siting a **Pallet Shelter Village** for families experiencing homelessness. This unique partnership will extend emergency housing to eight more families. We hope to have the site completed by May 2023.

One of the biggest barriers to serving even more families is qualified staff to help and guide families in securing permanent housing. If you have ever been called to serve homeless families—or you know someone who might be interested—please visit the Jobs page on our website. We would love to have you join our team as we work together to help even more families overcome homelessness!

Jim Dean

Executive Director



Hospitality House opens its doors

Through your support, Interfaith has opened its second scattered-site shelter. **Hospitality House** officially opened its doors on December 18, 2022.

In partnership with Cascade View Presbyterian Church, and located in Everett, Hospitality House will be able to accommodate up to three families with children at any given time.

This addition raises our total number of shelter units by 23%, and will be serve up to 40 individuals—including 24 children—each year.

Would you like to support Hospitality House with a gift or in-kind donation?



Visit: www.interfaithwa.org

And follow us on:

: @InterfaithFamilyShelter

: @FamilyShelterWA

: Interfaith.Family.Shelter

Increasing our footprint to serve even more families with children each night:



11 families
The Family Shelter
(1999)



18 families
Cars 2 Housing
& Miracle House
(2019—20)



21 families
Hospitality House
(2022)

Donor Spotlight: Jim Mallonee

Jim Mallonee lives his life by a simple acronym: “W-I-N,” he says with a twinkle in his eye, “or What’s Important Now.” He’s quick to note that he didn’t come up with it, but Jim is proactive and wants to get things done by focusing on what matters most.

Jim first encountered Interfaith in 2018, when he made a small gift to suggested charities listed in a friend’s obituary. His curiosity piqued, he contacted Executive Director Jim Dean to request a shelter tour. “The experience moved me,” he shares, “and I thought ‘This place is really good.’” The more he learned, Jim was increasingly convinced that Interfaith’s mission addressed an obvious need. “There are a lot of misconceptions about homelessness, and a lot of education needs to be done. Deep down, I want to make homelessness less of a factor— and especially for children. I really like that Interfaith shelters entire families and keeps them together.” Since then, Jim has done much to support Interfaith: from facilitating annual giving from the Men’s Club at St. John’s Catholic Church (Mukilteo), to serving on Interfaith’s Board, and most recently funding the kitchen remodel at our brand-new shelter extension, Hospitality House.



Jim Mallonee and Judy Mc Culloch

Charitable giving is important to Jim, particularly supporting the Alzheimer’s Association following his wife’s passing from Alzheimer’s in 2019. As a former CPA, he is especially interested in how donor-advised funds, qualified IRA minimum distributions, and other financial strategies can help supporters maximize their charitable impact. And Jim’s interest in Interfaith and our evolving programs has increased over the years. “I am thrilled that they were able to purchase the shelter property,” he smiles, “and I think there is much more to come from Interfaith.”

Nurturing Children & Strengthening Families

The **NW Children’s Foundation** (NWCF) focuses on helping local agencies provide support systems to keep children in safe nurturing environments by alleviating stresses and deficiencies that can lead to abuse and neglect. Their Strengthening Families initiative prioritizes reaching out to those coping with homelessness, mental illness, substance abuse and domestic violence – which are all some of the strongest risk factors for child abuse and neglect.

Since 2019, the NWCF has provided sustained and vital support for Interfaith’s Children’s Program, which provides Learning Hour, recreational activities, and a host of other services for

our youngest and most vulnerable clients.

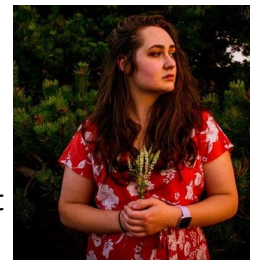
And we just received a 3-year **\$30,000** sustained grant from NWCF to support the Children’s Program through 2026. Thank you, NWCF, for all that you do to support Interfaith’s families and their children!



Staff Spotlight: Zoë Nida

Meet our Resident Skills Coordinator

It’s been just over a year since **Zoë Nida** became Interfaith’s Resident Skills Coordinator. Since then, she has celebrated a lot with our client families: graduations, birthdays, community meals, after-school hugs, new home move-in’s, recovery, and (best of all) hope and happiness blossom once again as families regain their footing.



“I oversee the food program that provides meals and cooking skills for residents, coordinate volunteer work and in-kind donations, manage daily chore schedules, and collaborate with other organizations to maintain overall health and safety at our shelters,” she says.

Zoë finds fulfillment in witnessing “our families succeed through adversity, and supporting them as they grow more comfortable and resilient.”

Volunteer or make an donation to Interfaith by connecting with Zoë on our How to Help webpage.



Interfaith Association of NW Washington

P.O. Box 12824
Everett, WA 98206

www.interfaithwa.org | (425) 252-6672 | jdean@interfaithwa.org