



INTERFAITH
Family
Shelter

June 2023

Summer 2023 Newsletter

Uniting in service to families,
with children, facing homelessness

From Our Executive Director:

Dear Friends of Interfaith,

As we approach the end of our fiscal year (June 30), I am happy to report that we have been able to help:

(a) more families move from homelessness to safe, stable housing and
(b) more families *remain* housed through prevention efforts than ever before. In December 2022, we added three more shelter units at Hospitality House. This now enables us to help 21 families at any given time in our emergency-shelter-and-rehousing programs.



And we are weeks away from breaking ground on our next opportunity! **Faith Family Village**, a collaborative partnership with Faith Lutheran Church (Everett), Faith Food Bank, and the City of Everett is finally under construction. We anticipate that eight more families will be safely housed in dry and warm shelter before school begins this Fall.

The Point in Time homelessness count taken each January indicates that there are still only half as many shelter units available for families compared to what is actually needed. And as long as that remains true, the Interfaith Family Shelter will continue our work to expand shelter capacity and prevent families from becoming homeless in the first place.

As we wrap up this fiscal year, your financial support is still vital to ensure that this year is also an economic success. Thank you for your support!

Jim Dean

Executive Director



Faith in Families' Resilience

Faith Family Village is an upcoming Pallet shelter project for families with children in Everett. We are very pleased to announce that Interfaith recently became the fiscal agent for Faith Family Village—which means that we will be running and operating the program later this year!

In partnership with Faith Lutheran Church, this community will provide another eight emergency shelter units for families in Snohomish County, and house about 32 people—including 19 children—at a time.

Faith Family Village will allow us to serve 38% more families every year—giving them the tools to overcome homelessness and become financially self-sufficient.

Learn more about all our shelter programs and support Interfaith with a gift or in-kind donation.



Visit: www.interfaithwa.org

And follow us on:

: @InterfaithFamilyShelter

: @FamilyShelterWA

: Interfaith.Family.Shelter

2023 Point-in-Time Homelessness Count: Snohomish County

14% increase
Family homelessness



30.7% increase
Clients at homeless shelters



18.3% increase
Unsheltered & homeless

Program Update: Keeping Families Housed

A little over two years ago, we launched the **Homeless Prevention Program (HPP)**. This innovative and cost-effective program helps families with children in Snohomish County stay housed and avoid becoming homeless. In an area where the average cost of rent is \$84,000 per year, families who fall within the extremely low-income category (\$30,000—\$60,000) face a precarious housing situation—where the slightest emergency can threaten home stability for the entire family unit. Following the end of the eviction moratorium last year, many families confront this uncertainty on an ongoing basis.

How it Works

Eligible families receive approx. \$1,700 to support them through a temporary setback (typically, rent and utility fees, sickness, or job loss). Clients may only apply once per year, and request funds toward a different housing stability issue—i.e., funding is not provided to cover recurring issues.

In two years, we have found that clients often just need help connecting with existing supportive resources, or providing budgeting assistance. Thus far, only one client family has applied for prevention funding twice.



85 families
2022-23



\$1,700
Average
amount
per family



> 50%
BIPOC
families

Who is not eligible

We provide *minimal* financial assistance, and are unable to work with families that are several months behind on rent and utility payments, or who have accumulated a backlog of costs. Requests such as these are referred to other community agencies that have adequate resources to dig families out of deep debt.

Program clients must also commit to addressing and mitigating home stability risks—i.e., doing everything possible to stay housed—after they receive assistance.

Typical threat factors: Rent & utility fees, sickness, job loss & late child support payments.

Partnering to Serve Children & Families

Our community partners enable us to achieve our mission by keeping families together, motivated to succeed, and healthy!



Improving School Attendance Collaborative. Promotes school attendance and academic success for families experiencing transition & homelessness.

United Way of Snohomish County's CORE Collaborative. Uses Collective Impact and 2-Generational models to create systems-oriented solutions for families experiencing poverty.



Farms for Life. A local nonprofit that supports local farmers and provides underserved communities with access to healthy produce.

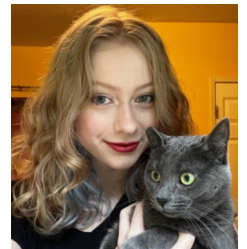


Volunteer Spotlight: Rosie Knudson

Rosie O'Malley Knudson first learned about Interfaith in 2016, when her high school Girl Scout troop responded to a Facebook ad to help build a playground at the shelter. They eventually did much more, including building a music wall and organizing the Children's Room. She soon got involved in tutoring and enjoyed it, and was even running some sessions less than two years later.

During COVID, Rosie found ways to continue supporting this program by running book drives, until she was able to return to the shelter in her senior year.

Rosie now studies law with a linguistic and social justice focus at Western Washington University. In her spare time, she loves studying languages and anything cat related. "I love getting to meet and work with the kids, especially because of how much progress you can see happen over three months," she says. "Also little kids in general—and especially the ones I met tutoring—are just the absolute sweetest!"



Would you like to volunteer at Interfaith? Contact us to learn more.



SCAN ME

Interfaith Association of NW Washington

P.O. Box 12824
Everett, WA 98206

www.interfaithwa.org | (425) 252-6672 | jdean@interfaithwa.org