



INTERFAITH
Family
Shelter

Spring 2025 Newsletter

Uniting in service to families,
with children, facing homelessness

March 2025

From Our Executive Director:

Greetings, Supporters! I hope you are in good health and spirits. It's a special year for us: we're celebrating our **40-year anniversary!** I wonder where families in homelessness could turn 40 years ago, before Interfaith?



You may know of Interfaith's humble beginnings. It all began when a group of churches combined their resources in 1984 to offer just one night of shelter for families with children. Our journey since then has not been without challenges, but it's uplifting to consider our tremendous impact on family homelessness in Snohomish County. Since 2009 (the farthest back our data goes), we've served over 600 families: that's over 2,100 people who would've otherwise slept in inhabitable places. Last year alone, 115 families used our emergency shelter services – the highest annual count yet.

The mission was simple then, and it's simple now: Interfaith is united in service to families – with children – facing homelessness.

As we face the next 40 years, we seek even more creative ways to shelter families. Our latest project, Madison Family Shelter (formerly Faith Family Village), provides eight tiny homes designed to be cost-effective and sustainable: it has served 22 families since it opened in January, 2024. And it increased our capacity from 16 to 24 family shelter units— we now operate 40% of all family shelter units in Snohomish County. We're challenging ourselves to think differently and better meet the growing need of hundreds of families in our communities. The work we do is important, and families depend on it. If not us, then who?

Executive Director

Celebrating 40 years!



INTERFAITH
Family
Shelter



Serving families
with children

It's a big year for us! From a single location in a church basement, the Interfaith Family Shelter has blossomed into one large shelter location, two scattered site programs, one Pallet shelter community, and a safe-parking program.

Strong partnerships with community and faith groups—all united by a shared mission—enable us to keep helping more families overcome homelessness and become self sufficient.

Visit: interfaithwa.org/40-years

We have exciting plans for the year ahead. And your support has brought us here! Stay tuned for updates and to learn how you can continue supporting the programs that transform families' lives.

Learn more and support us with a one-time or recurring gift:



SCAN ME

www.interfaithwa.org

: InterfaithFamilyShelter

: interfaith.familyshelter

Program Impact from Jan—Dec 2024:



68 families



99 adults



133 children

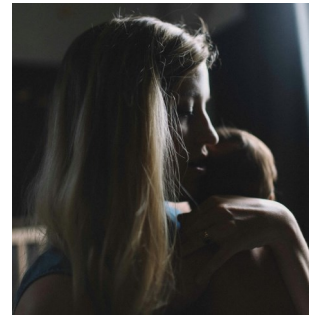
Client Spotlight: Shelley's Story

Shelley grew up in Hawaii where she met her ex-husband, and they moved to WA after she graduated college. But by early 2020, and in the early stages of recovery, she met Tommy at a sober house in Snohomish County. Despite concerns about his abusive behavior, Shelley's infant child and dependency needs made it difficult for her to break away from him—especially when Tommy promised to care for them. Besides, Tommy always found her when she did try to escape.

They moved to the east coast in search of a better life, but returned to WA when Shelley became pregnant again. Her efforts to work stable jobs were soon thwarted by the high cost of childcare, and being unable to leave Tommy at home with the children. Eventually, the family lost their Seattle apartment due to Tommy's addiction, and found themselves living in their car and later in a tent off Green Lake (Feb 2024). She recalls that Tommy often left her and the now three young children for days at a time—he would break her phone so that she could not contact friends or family.

Shelley finally escaped to a motel through DSHS and a navigator. But Tommy found her, and this time it was particularly ugly: he dislocated her jaw, fractured her cheekbone, and threatened to take their lives. Then the police intervened and arrested him—Shelley and the children were finally safe! That's when they came to the **Interfaith Family Shelter**. She struggled to adjust to normalcy and leave the constant fear behind. She persevered "for the kids," and worked diligently with our case manager to get housing and find a job.

We are proud to serve clients like Shelley and her young family (4, 3 and 2 years, respectively) and provide the resources and space for them to rebuild their lives from trauma. Shelley recently received the keys to her very own housing unit in Snohomish County, and her hard work is paying off. She is a measure of true resiliency. "I'm definitely stronger after a few months of being at Interfaith," she says. "I could not have done all this alone and been able to get housed within 90 days by myself."



**Names changed to protect confidentiality*

Funder Spotlight: Thank you!

Grant funding provides crucial support for our programs, staff, and services—it allow us to meet our mission.

The **Whitehorse Foundation** (through the Seattle Foundation)—a longtime program supporter—recently awarded Interfaith a grant to expand our Children's Program to

scattered site locations. This will make a huge



difference in serving families and our youngest clients at Miracle House, Hospitality House, and Madison Family Shelter. Thank you to the Whitehorse Foundation for making this possible!

And a heartfelt thank you to the **Medina Foundation** for also supporting Interfaith through a recent grant. We are humbled by your trust in our mission, programs, and impact.



Honoring their Service

Our Board of Directors has guided the Interfaith Family Shelter through thick and thin over these past 40 years.

Representing a cross-section of areas that intersect with family homelessness (e.g., mental health, financial planning, fundraising and development, children's health, housing and real estate, and more), their passion and leadership make all the difference. As they transition into other roles, we gratefully acknowledge these former Board Members:

- ♦ **Deanna Bashour (2021–24)** District McKinney-Vento & Foster Care Liaison, Marysville School District
- ♦ **Jim Mallonee (2023–24)** Accountant (ret.) and longtime supporter of Interfaith's mission.

Would YOU like to volunteer to serve on Interfaith's Board of Directors?
Apply at www.interfaithwa.org/our-board

Interfaith Association of NW Washington

P.O. Box 12824
Everett, WA 98206

www.interfaithwa.org | (425) 252-6672 | admin@interfaithwa.org